

SKODA | Kushaq



GLOBAL  NCAP   ★★★★★
India's Safest Family Car



Introduction

Exterior Design

Light Design

Interior Design

Connectivity

Performance

Safety

Storage & Utility

Kushaq Matte Edition

Kushaq Elegance Edition

Kushaq Monte Carlo

Wheels & Upholstery

Colours & Special Editions

Technical Specifications



Your Bold Companion for Bold New Journeys

Whether you're a seeker of breathtaking vistas or a fearless adventurer in pursuit of the extraordinary, ŠKODA stands as your unwavering bold companion. Get ready to embark on an unforgettable journey filled with cherished moments- let's drive, let's explore.



Exterior Design

Embrace the work of art in motion: a symphony of innovative design with bold aesthetics, tailor-made for unveiling the explorer within you.



Front View

Škoda Kushaq's signature grille, chrome accents, striking headlamps, and fog lamps are a testament to design excellence.



Top View

Embrace the beauty of infinite sky with the mesmerizing electric sunroof.



Rear View

Škoda Kodiaq gracefully echoes its heritage with rear lettering and czech crystal-inspired tail lights, wrapped in a dynamic design.



Light Design

Škoda Kushaq's impeccable design enhanced by complete led system for uninterrupted exploration.

Enhance Your Exploration with Light Design

Škoda Crystalline LED Headlamps with Day Time Running Lights

The main headlamps boast an eye-catching integrated strip of LED day time running lights. Under poor light conditions, the fog lamps with their static cornering function come into their own, ensuring maximum safety.



Škoda Crystalline Split LED Tail Lamps

The rear lights have LED technology as standard, while the crystalline design refers to Czech cubism and the country's glass-making tradition. Their sharp lines make the vehicle stand out confidently.



Interior Design

Embrace the lap of luxury every time you drive.



Comfort and Space

Begin your exploration enveloped in unparalleled comfort and space. Škoda's craftsmanship shines through its sleek black leatherette seats, offering an extraordinary premium escapade.



Scuff plates with Kushaq inscription



The ambient lighting in white color helps amplify the coziness



Electrically adjustable & Ventilated front seats.



Ingenious design for seamless functionality

The Electric Sunroof

The Electric Sunroof with anti - pinch technology allows you to create a large open space above the seats, so you can enjoy new vistas and the journey even more.





Infotainment, Cockpit and Connectivity at Your Fingertips

With Škoda Kodiaq's whole range of infotainment and connectivity features, you are all set for an exploration infused with entertainment.

25.4cm Škoda Infotainment System

A statement piece on the dashboard, the infotainment system can be operated via touch controls. With Wireless SmartLink (Apple CarPlay & Android Auto), seamlessly connect your phone to the system to access Škoda Play Apps, browse menus, navigate, make calls, and more – making every drive a delightful experience.



20.32cm Škoda Virtual Cockpit

The virtual display behind the steering wheel features information like speed, distance travelled, service interval, average fuel consumption and much more.

MyŠKODA ConnectED



MyŠKODA ConnectED Online Services

The inbuilt connectivity mobile online services can be accessed at any time via the MyŠKODA ConnectED app. The app displays features like Vehicle Health Report and remote vehicle data retrieval, including parking location, through automated data storage upon ignition shutdown.

Track Your Car

Keep an eye on the car location from your home or office. Stay informed when someone is driving your car.

Route Tracking / Deviation Alert

Live track the travel route taken by your family and get quick deviation alerts.

Real-time Speed Tracking

Monitor the real time driving speed.

Walk To Car

Locate your car quickly in big parking lots or crowded areas.

Geofence Breach Notification

Add geofence boundary for your car, get an alert as geofence area is breached.

Device Tampering Alert

Stay alert with prompt notifications on device tampering.

Road Side Assistance

Get road side services like flat tyre repair, battery jump-start, refuelling, towing and a lot more.

Driving Behaviour

Get real-time information on driving behaviour eg: harsh braking, sharp turns, over speeding, rapid acceleration, etc.



Performance

Built to power through without compromising on performance, the Škoda Kushaq is a powerhouse on the inside and outside.



Engine

The Škoda Kushaq comes with 2 engine variants - 1.0 TSI and 1.5 TSI. The engines are modern, dynamic, and efficient.

1.0 TSI Engine

The 1.0 TSI engine, with 85 kW power and 178 Nm torque, is powerful yet efficient. The engine is available in both manual and automatic.



1.5 TSI Engine*

The Škoda Kushaq's 1.5 TSI DSG engine with ACT - Active Cylinder Technology, the first in segment, churns out 110 kW power. Over 250 Nm torque ensures great acceleration and an enjoyable drive. It is available in both manual and automatic.

Manual Transmission

The car is offered with a 6-speed manual transmission.



Automatic Transmission

Depending on the engine, the car can be equipped with 6-speed automatic and 7-speed DSG transmission.





GLOBAL  NCAP   ★★★★★

Safety

Explore every km with confidence in India's first ever car with 5-star rating in child & adult safety.

High Strength Steel Frames

Škoda Kuchaq's marvelous design and engineering represent the epitome of safety, as evidenced by its 5-star Global NCAP rating for child and adult safety.



Safe Happens

In critical scenarios beyond driver control, the car's passive features, like airbags, assume control.

Front Side Airbags

These airbags protect the pelvis and chest of the driver and passengers in case of a side collision.

Curtain Airbags

These two airbags protect the pelvis and chest of the driver and other passengers in the event of a side collision.

Driver & Passenger Front Airbags

While the driver airbag is enclosed in the steering wheel, the passenger airbag is located in the dashboard. If needed, this can be deactivated when a child seat is installed on the front seat.

Traction Control System (TCS)

TCS/ASR stabilizes the vehicle during acceleration or low-grip conditions by cutting drive power to spinning wheels.

Anti-lock Braking System (ABS)

ABS helps maintain control of the vehicle during emergency braking. An ABS intervention is noticeable by pulsating movements of the brake pedal.

Roll Over Protection

On identifying a rollover threat, the ESC brakes particular wheels as prevention.

Brake Disc Wiping

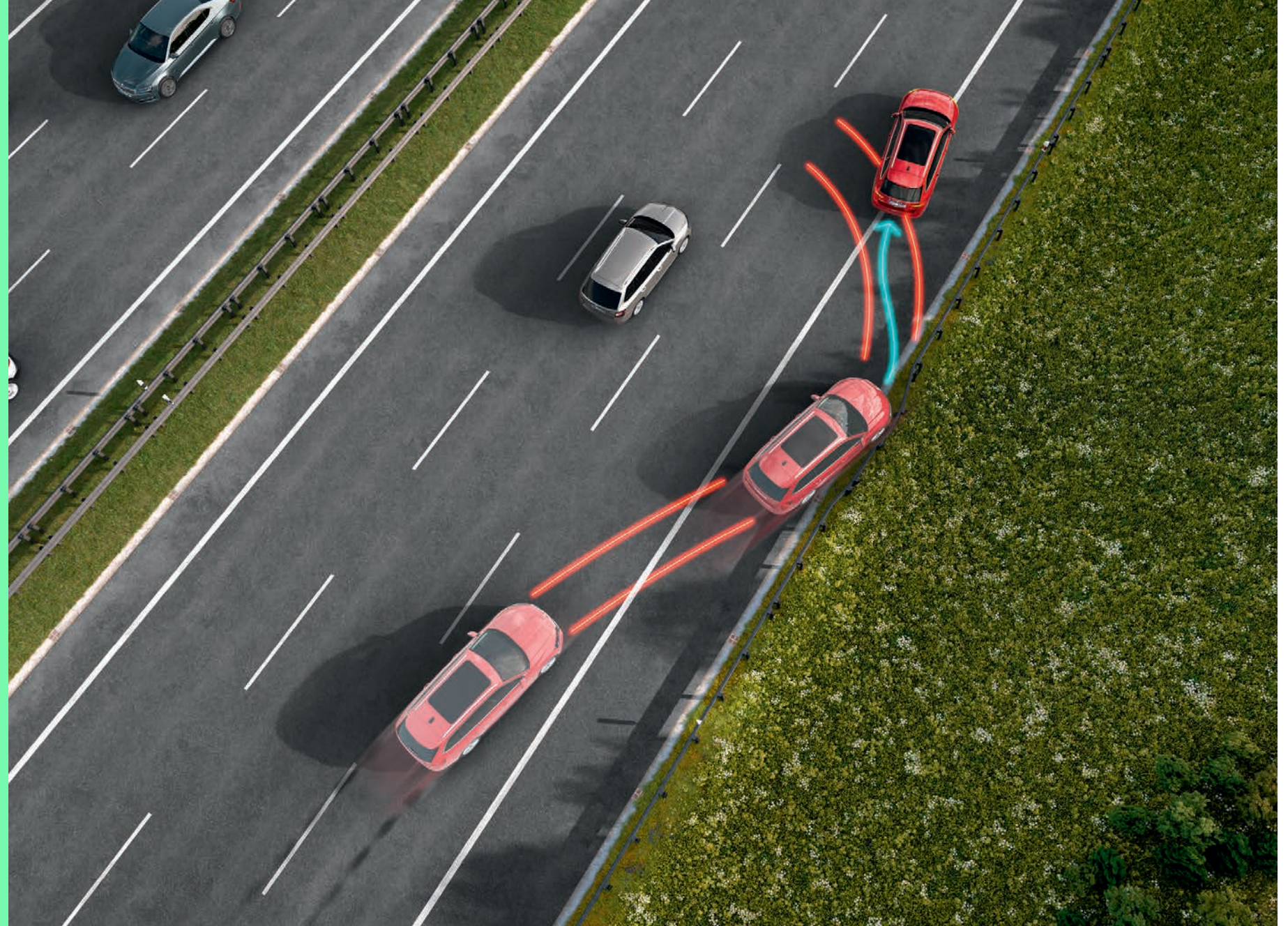
BDW (rain) feature is to prevent slow brake "kick-in" in emergency situations.

Motor Slip Regulation (MSR)

MSR helps maintain control during sudden speed reduction by preventing driven wheel lock, ensuring smoother rotation and control through increased engine speed.

Electronic Differential Locking System

EDS helps to stabilise the vehicle when driving on road surfaces with different grip under the individual wheels. XDS+ helps to keep the vehicle on the turn by effectively braking the wheels on the inner side of the turn. XDS is functional up to 30km/hr.



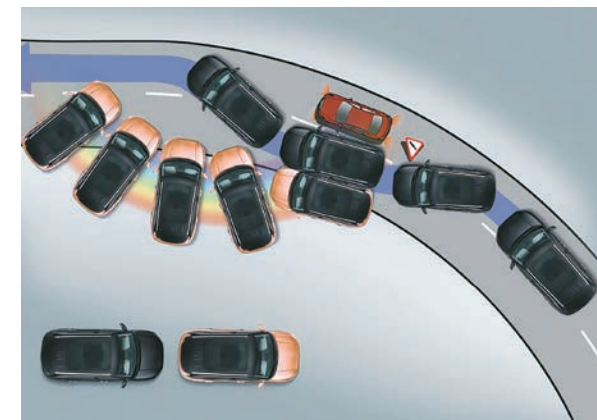
Hill Hold Control

HHC allows a safe start uphill without using the parking brake.



Tyre Pressure Monitoring System

Avoid unnecessary pitstops by keeping tabs on your tyres. This feature, which is standard across all variants, detects and alerts the driver to a drop in pressure in any of the 4 tyres.



Electronic Stability Control (Available Across All Variants)

ESC helps to maintain directional stability and tyre traction during understeer and oversteer.



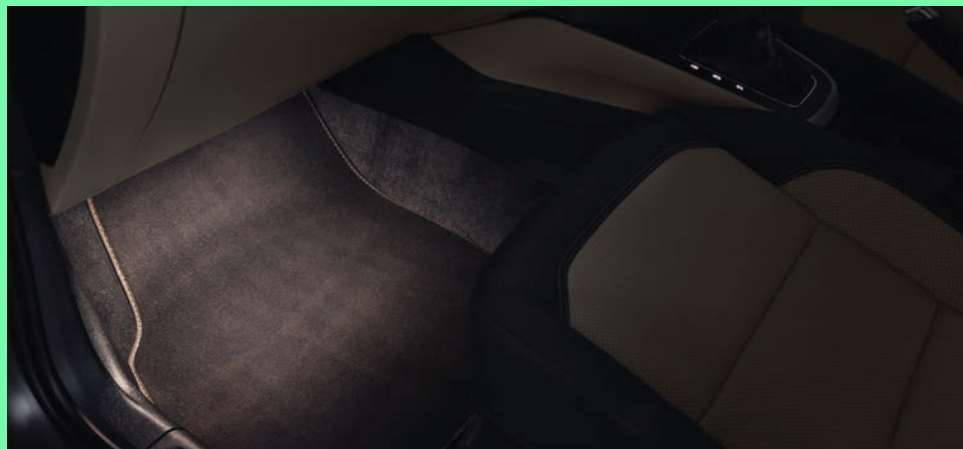
Storage and Utility

From glasses to refreshments, the spacious storage effortlessly carries your essentials, granting you the freedom to explore without limitations.



Luggage Capacity

Škoda kushaq's extra spacious luggage compartment not only ensures practicality and organization but also empowers your spirit of exploration. The standard rear seats (60:40 folding split) offer a voluminous 385 liters of boot space, complete with 2 fixed hooks and top-tether points. When the journey calls for it, effortlessly fold rear seats via the remote release button for convenience on the go.



Footwell Illumination



Storage In Front Centre Armrest



Cooled Glovebox



Storage In the Front and Rear Doors



Cupholders In Armrest



Reflective Safety Tape On All Four Doors

Enhance safety with reflective tape on every door stay visible, stay safe - even when light is low.



Two 3 Kg Hooks In The Trunk

A clever feature that enables you to keep your bags in one place without worrying about spillage.



Smartphone Pocket

A unique and thoughtful feature for rear passengers to store their Smartphones safely.



Smartgrip Bottle Holder

A clever addition, it is designed to hold your bottles firmly in place, even allowing you to open them with one hand.



Smartclip Ticket Holder

The Smartclip ticket holder at the side of your windshield is placed to ensure that the tickets that need to be displayed are done so without hassle.



Utility Recess On The Dashboard

A designated space on the Dashboard to add a little bit of your personality to the car throughout your journey.



Wireless Charging

Seamless Connectivity on the Move with Wireless Phone Charging.



12V Power Socket In Front Centre Console

A 12V power socket is provided in the front centre console to give ease of use on the go.



Adjustable Rear A/C Vents

The adjustable rear A/C vents ensure comfort to all passengers aboard the Škoda Kushaq.



Climatronic A/C with Aircare Function

Climatronic automatic air conditioning with electronic regulation of cabin temperature to ensure that everyone in the car has maximum comfort.



Rear View Camera with Static Guidelines

To make driving and parking a breeze, the car is equipped with a rear camera.



Two USB-C Socket In Front and Rear

Charge your devices with ease with two USB-C sockets in the front and rear.



Kessy

The Keyless Entry Start & Stop System enables convenient locking and unlocking of the car.



Cruise Control

Along with your pre-set speed, cruise control allows speed adjustments without pedal use.

The New Kushaq Matte Edition

Your Powerful New Explorer



Introducing **Elegance Edition** **In Deep Black**



**Vega Dual Tone
Alloys**



Radiator Chrome Grill



**Body Side Molding
Chrome**



**'Elegance' Badge on
B-Pillar**



Puddle Lamp



**Textile Mat &
Aluminium Pedal**



**'Elegance' Seat-Belt
Cushions & Neck Rests**



**Steering Wheel
'Elegance' Badge**



'Elegance' Cushions

The All-new Škoda Kushaq Monte Carlo.

Get The Look That Matters.



**Monte Carlo Fender
Garnish**



**R17 Dual-tone Vega Alloy
Wheels With Red Brake
Calipers***



**Monte Carlo Inscribed
Ventilated
Red & Black Front
Leatherette Seats**



**Red Ambient Lighting
with Ruby Red Metallic
Décor**



**Škoda Signature Grille
With Glossy Black
Surround**



**20.32cm Škoda Virtual
Cockpit with Red Theme**

Wheels



Active

Steel Wheels R(16), Lhotse



Ambition

Alloy Wheels R(16), Grus



Style

Alloy Wheels R(17), Vega Silver



Monte Carlo

R17 Dual-tone Vega Alloy Wheels
With Red Brake Calipers

Upholstery



Active

Black fabric woven seats.



Ambition

Black fabric seats with dual
colour sporty centre stripes.



Style

Black leatherette front and rear
seats with perforated grey designs.



Monte Carlo

Inscribed Ventilated
Red & Black Front leatherette seats

Colours



Candy White



Carbon Steel



Brilliant Silver



Tornado Red

*Available on select variant only



Lava Blue

Dual Tone Colour

*Available on select variant only



Brilliant Silver With Carbon Steel Roof

Special Editions



Kushaq Onyx - Candy White



Kushaq Onyx - Carbon Steel



Kushaq Matte Edition



Elegance Edition - Deep Black



Monte Carlo - Candy White with Carbon Steel Painted Roof



Monte Carlo - Tornado Red with Carbon Steel Painted Roof

Technical Specifications

Technical Description	1.0 TSI/85 kW		1.5 TSI/110 kW	
Engine	MT	AT	MT	DSG
Engine type	1.0 TSI Petrol, in-line, 4-Stroke Positive Ignition Direct Injection Engine		1.5 TSI Petrol, in-line, 4-Stroke Positive Ignition Direct Injection Engine with Active Cylinder Technology	
Clutch	Dry Single Plate	Hydro Dynamic Torque Converter	Dry Single Plate	Dry Double Clutch
Cylinders	3		4	
Displacement [cm ³]	999		1 498	
Max. power/revs [kW at rpm]	85 / 5 000 - 5 500		110 / 5 000 - 6 000	
Max. torque/revs [Nm at rpm]	178 / 1 750 - 4 500		250 / 1 600 - 3 500	
Fuel consumption - rule 115 of CMVR [KMPL]	19.76	18.09	18.60	18.86
Transmission				
Wheel drive	Front Wheel Drive			
Transmission	6-speed	6-speed	6-speed	7-speed
Chassis				
Front axle	McPherson suspension with lower triangular links and stabiliser bar			
Rear axle	Twist Beam Axle			
Braking system	Hydraulic Diagonal Split Vacuum Assisted Braking System			
Brake – front	Disc			
Brake – rear	Drum			
Steering system	Electro-Mechanical Steering (Power Assisted)			
Wheels	Steel wheel 6J x 16" (Active/ONYX), Alloy wheel 6J x 16" (Ambition), Alloy wheel 6.5J x 17" (Style NSR & Style)			
Tyres	205/60R16-Active & Ambition, 205/55R17-Style NSR/Style			
Outside dimensions				
Length [mm]	4 225			
Width [mm]	1 760			
Height [mm]	1 612			
Wheel base [mm]	2 651			
Ground clearance (laden condition) [mm]	155		155	
Inside dimensions				
Storage capacity [l]	385 / 1 405			
Weights				
Kerb weight [kg]	1193-1248	1245-1284	1269-1300	1278-1309
Gross weight [kg]	1 640	1 660	1683	1696
Liquids				
Tank capacity [l]	50 Litres			

Engine & Trim	Active	Onyx	Ambition	Style		Monte Carlo
				Non-Sunroof	With Sunroof	
Optional Features						
1.0 TSI/ 85 kW (115 PS)	MT	MT	MT/AT	MT	MT/AT	MT/AT
1.5 TSI/ 110 kW (150 PS)	-	-	MT/ DSG	-	MT/DSG	MT/DSG
Design						
Wheels						
Steel wheels R(16) + Wheel cover, Lhotse	■	-	-	-	-	-
Steel wheels R(16) + Wheel cover, Tecton	-	■	-	-	-	-
Alloy wheels R(16), Grus	-	-	■	-	-	-
Alloy wheels R(17), Silver VEGA	-	-	-	■	■	-
Alloy wheels R(17), Dual tone VEGA	-	-	-	-	-	■
Spare Wheel R(15)	■	■	■	■	-	-
Spare Wheel R(16)	-	-	-	-	■	■
Exterior Design & Chrome Décor						
Door handles in body color without chrome accents	■	■	■	-	-	-
Door handles in body color with chrome accents	-	-	-	■	■	-
Door handles in body color with dark chrome accents	-	-	-	-	-	■
Roof rails black with load capacity of 50 Kg	■	■	-	-	-	■
Roof rails silver with load capacity of 50 Kg	-	-	■	■	■	-
Onyx Badge on B-Pillar	-	■	-	-	-	-
Aerodynamic Tailgate Spoiler	■	■	■	■	■	-
Dual tone Tailgate Spoiler	-	-	-	-	-	■
Škoda Piano Black Fender Garnish with Chrome outline	■	■	■	■	■	-
Monte Carlo Fender Garnish	-	-	-	-	-	■
Škoda Signature Grill With Chrome Surround	■	■	■	■	■	-
Škoda Signature Grill with Glossy Black Surround	-	-	-	-	-	■
Chrome highlights on front bumper air intake	-	-	-	■	■	■
Rear Bumper Reflectors	■	■	■	■	■	■

Engine & Trim	Active	Onyx	Ambition	Style		Monte Carlo
				Non-Sunroof	With Sunroof	
Optional Features						
Exterior Colour Coding						
Black grained Armoured front and rear diffuser	■	■	-	-	-	-
Silver Armoured front and rear diffuser	-	-	■	■	■	-
Glossy Black Front & Rear Diffuser	-	-	-	-	-	■
Black side armoured cladding	■	■	■	■	■	■
Manually foldable external mirrors- Body Colored	■	■	-	-	-	-
Electrically foldable external mirrors- Body Colored	-	-	■	■	■	-
Glossy Black Electrically Foldable External Mirrors	-	-	-	-	-	■
Matte Black Plastic Cover On B-Pillar & C-Pillar	■	■	■	-	-	-
Glossy Black Plastic cover on B-Pillar & C-Pillar	-	-	-	■	■	■
Carbon Steel Painted Roof	-	-	-	-	-	■
Window Chrome Garnish	-	-	-	■	■	-
Trunk Chrome Garnish	-	-	-	■	■	-
Glossy Black Trunk Garnish	-	-	-	-	-	■
Sporty Red Front Brake Calipers (Available only for 1.5 TSI)	-	-	-	-	-	■
Interior Design, Chrome Décor & Colours						
Dashboard with Grained and Textured décor	■	■	-	-	-	-
Dashboard with Painted décor insert	-	-	■	■	■	-
Dashboard with Dual tone interior Décor with Ruby Red Metallic inserts	-	-	-	-	-	■
Premium Honeycomb Décor on Dashboard	■	■	■	■	■	■
Dual Tone Centre console & Interior Front Door Handles with Ruby Red Metallic Inserts	-	-	-	-	-	■
Chrome dashboard line	-	-	-	■	■	-
Chrome décor for interior door handles	-	-	■	■	■	■
Chrome ring on the gear shift knob	■	■	■	■	■	■
Black Plastic handbrake with Glossy Black handle button	■	■	■	-	-	-

Engine & Trim	Active	Onyx	Ambition	Style		Monte Carlo
				Non-Sunroof	With Sunroof	
Optional Features						
Black Plastic handbrake with Chrome handle button	-	-	-	■	■	■
Chrome insert under gear-shift knob	-	-	-	■	■	■
Black gloss surround on side air conditioning vents	■	■	-	-	-	-
Chrome trim surround on side air conditioning vents & insert on Steering Wheel	-	-	■	■	■	■
Chrome trim on air conditioning duct sliders	■	■	■	■	■	■
Front Scuff plates with Kushaq inscription	-	-	■	■	■	-
Monte Carlo Inscribed Front Scuff plates	-	-	-	-	-	■
Safety						
Illumination						
Halogen Headlamps with Škoda Crystalline Day time running lights	■	-	-	-	-	-
Škoda Crystalline LED Headlamps with Day time Running Lights	-	■	■	■	■	■
Škoda Crystalline LED Tail lamps with Reflective lamp	■	■	■	-	-	-
ŠKODA Crystalline Split LED Tail lamps	-	-	-	■	■	■
Front fog lamps with static cornering function	-	■	■	■	■	■
Rear Foglamps	-	-	-	-	■	■
Light Assistant - Auto Headlamps	-	-	-	■	■	■
Manual coming/leaving home lights	■	■	■	-	-	-
Automatic coming/leaving home lights	-	-	-	■	■	■
LED Reading Lamps - Front&Rear	■	■	■	■	■	■
Ambient Interior lighting- Dashboard & Door Handles	-	-	■	■	■	-
Footwell Illumination	-	-	-	■	■	■
Red Ambient Interior lighting - Dashboard	-	-	-	-	-	■
Rear LED Number Plate Illumination	■	■	■	■	■	■
Visibility						
Anti-glare outside rear view mirror	■	■	■	■	■	■
Automatic front wiper system with rain sensor	-	-	-	-	■	■

Engine & Trim	Active	Onyx	Ambition	Style		Monte Carlo
				Non-Sunroof	With Sunroof	
Optional Features						
Rear wiper & Defogger	-	■	■	■	■	■
Auto dimming interior rear view mirror	-	-	-	-	■	■
Braking & Stabilizing Systems						
ESC (Electronic Stability control), ABS (Anti-lock Braking System) & EBD	■	■	■	■	■	■
MKB (Multi Collision Braking)	■	■	■	■	■	■
HHC (Hill Hold Control)	-	-	■	■	■	■
EDS (Electronic Differential Lock System), XDS & XDS+ (Over 30 Kph)	■	■	■	■	■	■
TCS(Traction Control System), MSR(Motor Slip Regulation)	■	■	■	■	■	■
BDW (Brake Disc Wiping)	■	■	■	■	■	■
ROP (Roll Over Protection)	■	■	■	■	■	■
Airbags						
Driver & Passenger front airbag	■	■	■	■	■	■
Curtain Airbags	■	■	■	■	■	■
Front Side Airbags	■	■	■	■	■	■
Occupant Restraint						
Three-point seatbelts at front	■	■	■	■	■	■
Three-point rear outer and centre seatbelt	■	■	■	■	■	■
Height adjustable head restraints at Front & Rear	■	■	■	■	■	■
Front Seat Belt Reminder	■	■	■	■	■	■
More						
Start Stop Recuperation	■	■	■	■	■	■
TPMS (Tyre pressure monitoring system)	■	■	■	■	■	■
Rough road package	■	■	■	■	■	■
Child-proof rear door locking	■	■	■	■	■	■
Child-proof rear window locking	■	■	■	■	■	■
ISOFIX for Rear Seats	■	■	■	■	■	■
Door-open indicator	■	■	■	■	■	■
Emergency triangle in the luggage compartment	■	■	■	■	■	■

Engine & Trim	Active	Onyx	Ambition	Style		Monte Carlo
				Non-Sunroof	With Sunroof	
Optional Features						
Dual-tone warning horn	-	-	■	■	■	■
Security						
Electronic Theft Deterrence						
Engine immobilizer with floating code system	■	■	■	■	■	■
Anti-Theft Alarm	-	-	-	■	■	■
Remote Operation						
Central door locking with speed sensor	■	■	■	-	-	-
KESY (Engine Start/Stop & Locking/Unlocking of Door)	-	-	-	■	■	■
Remote control with foldable key	■	■	■	■	■	■
Central locking and unlocking of doors and boot lid	■	■	■	■	■	■
Comfort						
Seats						
Rear seats split 60:40 foldable with center armrest	-	-	■	■	■	■
Height adjustment for driver seat	■	■	■	-	-	-
Electric Seats with Driver and Co-Driver seats	-	-	-	■	■	■
Front centre armrest with storage	■	■	■	■	■	■
Rear centre armrest	-	-	■	■	■	■
Upholstery						
Black Fabric Woven Seats	■	-	-	-	-	-
Onyx Design Perforated Leatherette seats with fabric inserts	-	■	-	-	-	-
Black Fabric Seats with Dual Color Sporty Center Stripes	-	-	■	-	-	-
Ventilated Black Leatherette Front seats with perforated grey design	-	-	-	■	■	-
Black leatherette Rear seats with perforated grey design	-	-	-	■	■	-
Ventilated Red and Black Front Leatherette Seats with Monte Carlo Embossing on Front Headrests	-	-	-	-	-	■
Red and Black Rear Leatherette seats with Monte Carlo Embossing on Two Rear Headrests	-	-	-	-	-	■

Engine & Trim	Active	Onyx	Ambition	Style		Monte Carlo
				Non-Sunroof	With Sunroof	
Optional Features						
Additional Upholstery						
Front & Rear Door armrest with cushioned fabric upholstery	■	■	■	-	-	-
Front & Rear Door armrest with cushioned leatherette upholstery	-	-	-	■	■	-
Front & Rear Door armrest with Red Stitching	-	-	-	-	-	■
Front Center armrest with Red Stitching	-	-	-	-	-	■
Steering Wheel						
2 Spoke Multifunctional Steering Wheel (PU) with chrome scroller	■	■	-	-	-	-
2 Spoke Multifunctional Steering Wheel (Leather) with chrome scroller	-	-	■	■	■	-
2 Spoke Multifunctional Leather Steering Wheel with red stitching and chrome scroller	-	-	-	-	-	■
Height & Length adjustable steering wheel	■	■	■	■	■	■
Paddle Shifters	-	-	■ (AT Only)	-	■ (AT Only)	■ (AT Only)
Infotainment & Connectivity						
17.7cm ŠKODA Infotainment System with SDVS Function (7 Inch Infotainment)	■	■	-	-	-	-
Wired Smartlink-Apple Carplay & Android Auto via USB	■	■	-	-	-	-
25.4 cm Infotainment System with ŠKODA Play Apps	-	-	■	■	■	-
25.4 cm Infotainment System with ŠKODA Play Apps & Red theme	-	-	-	-	-	■
Wireless Smartlink-Apple Carplay & Android Auto	-	-	■	■	■	■
6 Speakers	■	■	■	■	-	-
ŠKODA Sound System with 6 High Performance Speakers & Subwoofer	-	-	-	-	■	■
MyŠKODA Connect- Inbuilt Connectivity	-	-	-	■	■	■

Engine & Trim	Active	Onyx	Ambition	Style		Monte Carlo
				Non-Sunroof	With Sunroof	
Optional Features						
Climate Control						
Manual A/C	■	-	-	-	-	-
Climatronic - Auto A/C with control touch panel & Air Care function	-	■	■	■	■	■
Adjustable dual rear A/C vents	■	■	■	■	■	■
Sunroof						
Electric Sunroof with Bounce Back System	-	-	-	-	■	■
Windows						
Power Windows Front & Rear, 4x Control on Driver Side	■	■	■	■	■	■
One-touch automatic operation (Only Driver Side)	-	-	■	■	■	■
Bounce-back system (Only Driver Side)	-	-	■	■	■	■
More						
Dead Pedal for Foot Rest	■	■	■	■	■	■
CONVENIENCE						
Information Display						
2 dials global MFA (Gearshift indicator, multifunctional segment display Basic)	■	■	-	-	-	-
4 dials medium MFA with 3.5" TFT display MAXIDOT (Gearshift indicator, multifunctional segment display Basic Travelling time, Distance travelled, Average speed, Immediate consumption, Average consumption, Travel distance before refueling, Service Interval, Outside temperature, Clock)	-	-	■	■	-	-
20.32cm ŠKODA Virtual Cockpit	-	-	-	-	■	■
Electronic Driving Aid						
Cruise Control	-	-	■	■	■	■
Rear view camera - with static guidelines	-	-	■	■	■	■
Parktronic Sensor at rear	■	■	■	■	■	■
More						
12V power socket in front centre console	■	■	■	■	■	■

Engine & Trim	Active	Onyx	Ambition	Style		Monte Carlo
				Non-Sunroof	With Sunroof	
Optional Features						
2 x USB-C socket in front (Data & Charging)	-	-	■	■	■	■
Wireless Charging (With Selected Smartphones)	-	-	-	■	■	■
Front sun visors with vanity mirror on co-driver side	■	■	■	■	■	■
Sharkfin antenna	-	-	■	■	■	■
Four Foldable roof grab handles	■	■	■	■	■	■
Storage						
385 litres of boot space with 2 fixed hooks and Top-Tether Points	■	■	■	■	■	■
Storage compartment in the front and rear doors	■	■	■	■	■	■
Bottle holders in the front & Rear doors	■	■	■	■	■	■
Cup holders- Center Rear Armrest	-	-	■	■	■	■
Storage compartment in the front centre console & Centre armrest	■	■	■	■	■	■
Cooled Glovebox	-	-	■	■	■	■
Rear parcel shelf	-	-	■	■	■	■
Simply Clever Features						
Sunglass Holder in Roofliner	-	-	■	■	-	-
Front Seat back Pockets (Driver & Co-Driver)	-	-	■	■	■	■
SmartClip ticket holder	■	■	■	■	■	■
Two USB-C socket in rear (Charging)	-	-	■	■	■	■
Coat hook on rear roof handles	■	■	■	■	■	■
Utility Recess on the Dashboard	■	■	■	■	■	■
Reflective Tape on all four Doors	■	■	■	■	■	■
Smart Grip Mat for one hand bottle operation	■	■	■	■	■	■

Legend

- Equipment available on the marked trimline
- Equipment not available on the marked trimline

SKODA

www.skoda-auto.co.in | ☎ Toll-free 18 00 27 00 260

Dealer:

Specifications given differ from model to model. As a part of continuous product development, Škoda always upgrades its model range with innovative features. Such features are only available in the vehicles manufactured after a particular date. Please verify the feature list with our authorised dealer. Accessories shown may not be part of standard equipment. Always insist on genuine Škoda Auto parts and accessories available at authorised sales and service centres. Information relating to colours, prices, construction, technical details and equipment was valid at the time of issuance and these are subject to changes without any prior notice. All disputes are subject to the courts in Mumbai jurisdiction only. Terms and conditions apply. years/1 00 000 km; Promotional offer, additional warranty 3rd & 4th year. Škoda Assist - 4 years unlimited km. Škoda Maintenance Package - 4 years/60 000 km; Four periodic maintenance services at the interval of 15 000 km or one year (whichever comes first from the date of delivery), available at an attractive price. The features mentioned in the catalogue(brochure) are of Style variant. These images are created using computer graphics and no real car is used while creating these images.